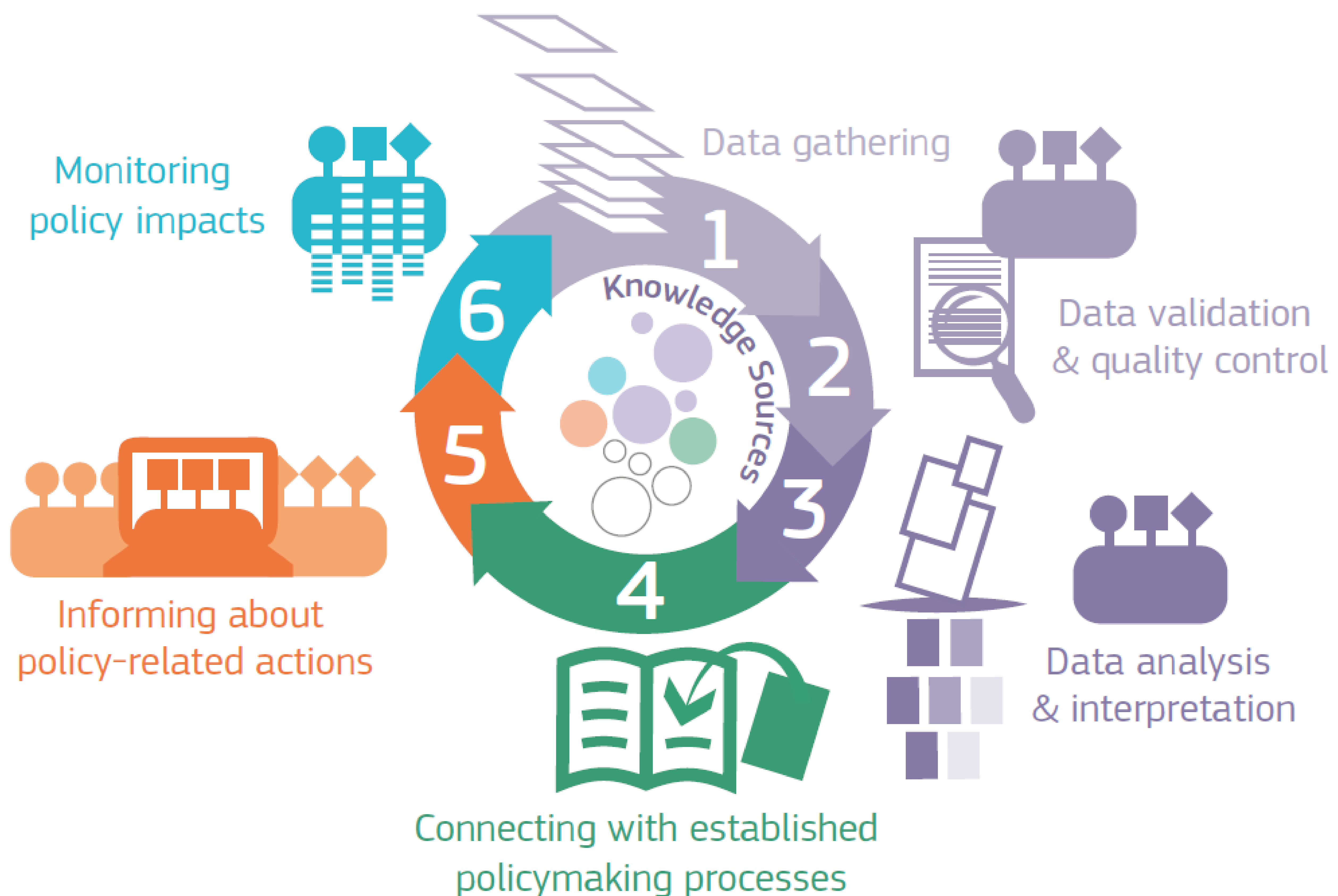


Cyclic value chain of Citizen Science for policy

The interest in using Citizen Science for policy gradually increases - either to address post-truth politics, or to directly contribute to different stages of the policy making process. Popular examples for addressing the latter include the contribution of volunteers to the monitoring of that status of the environment - such as spreading of invasive species, the decrease of pollinators, or changes in air quality.

We see a strong need to investigate the different phases where Citizen Science and policy can actually be connected. As a result, this poster introduces a six-phased 'cyclic value chain of Citizen Science'. It provides a structured framework for more detailed analysis, and as a possible starting point to develop a methodology that offers Citizen Scientists the possibility to engage along the complete policy making process.

At this conference we hope to stimulate a deeper discussion about the overall topic and to receive concrete feedback about our approach. Please feel free to contact us in person, or to drop us an e-mail with comments or questions!



The diagram illustrates in six phases how citizen scientists might engage in evidence-based policy making. Notably, these engagements do not only include data collection or validation, but also an explicit connection to the underlying policies and the monitoring of policy impacts. At the same time, Phases 1-3 (data gathering, quality control and analysis) capture facets of most Citizen Science projects. This part of our work thereby also contributes to the Open Science Agenda and concepts such as Responsible Research and Innovation (RRI). Phases 4-6 (connection to policy, informing about actions and monitoring impacts) represent our novel and innovative work. These explicit connections between Citizen Science and (EU) policy are hardly researched. Issues, such as transparency about the use of citizens' contributions in policy, contribute to the Better Regulation Agenda.